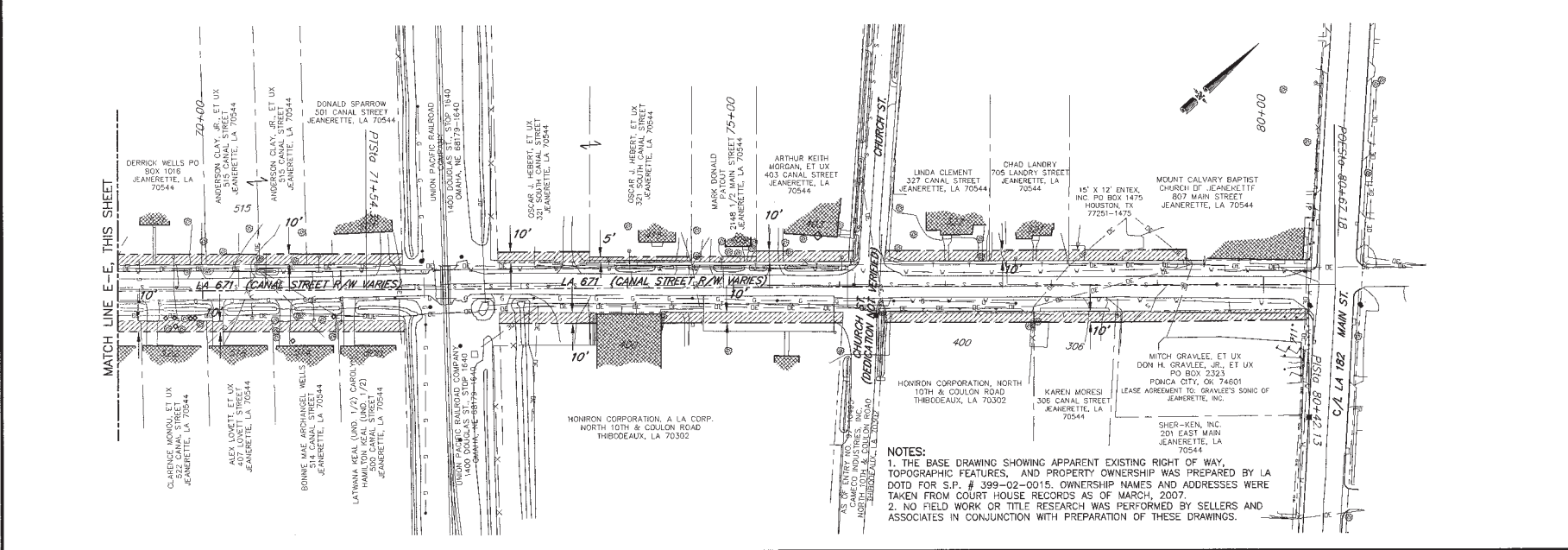


DATE: 11/16/10  
 DRAWN BY: J. L. WILSON  
 CHECKED BY: J. L. WILSON



MATCH LINE E-E, THIS SHEET

MATCH LINE D-D, SHEET 2

**LEGEND**

--- APPARENT EXISTING R/W  
 --- APPARENT PROPERTY LINES  
 --- REQUIRED UTILITY SERVIDUE

**CANAL STREET (LA. 671)  
 IMPROVEMENTS  
 FOR THE  
 CITY OF JEANERETTE**

LOCATED IN SECTION, T-12-S, R-2-E  
 IBERIA PARISH, LOUISIANA

**ENGINEER**  
 J. L. WILSON

**DRAWN BY**  
 KDC/JFL/LAC

**DATE**  
 APRIL 9, 2008

**SCALE**  
 1" = 50'

**PROJECT NO.**  
 7896-02

**FILE NO.**  
 S/PROJECTS

**ACAD. DWG. NO.**  
 104717896-02/7896-02.dwg

**SHEET**  
 3

**OF 3 SHEETS**

**SHEET DESCRIPTION**  
 MAP SHOWING EXISTING  
 RIGHT-OF-WAY AND REQUIRED  
 UTILITY SERVICES

**Sellers & Associates, Inc.**  
 ENGINEERS  
 SURVEYORS  
 LOUISIANA

**REVISIONS**

DATE	BY
1/8/2010	TAV

**1/6/10**

**STATE OF LOUISIANA**  
 J. L. WILSON  
 REG. NO. 4781  
 REGISTERED PROFESSIONAL  
 LAND SURVEYOR