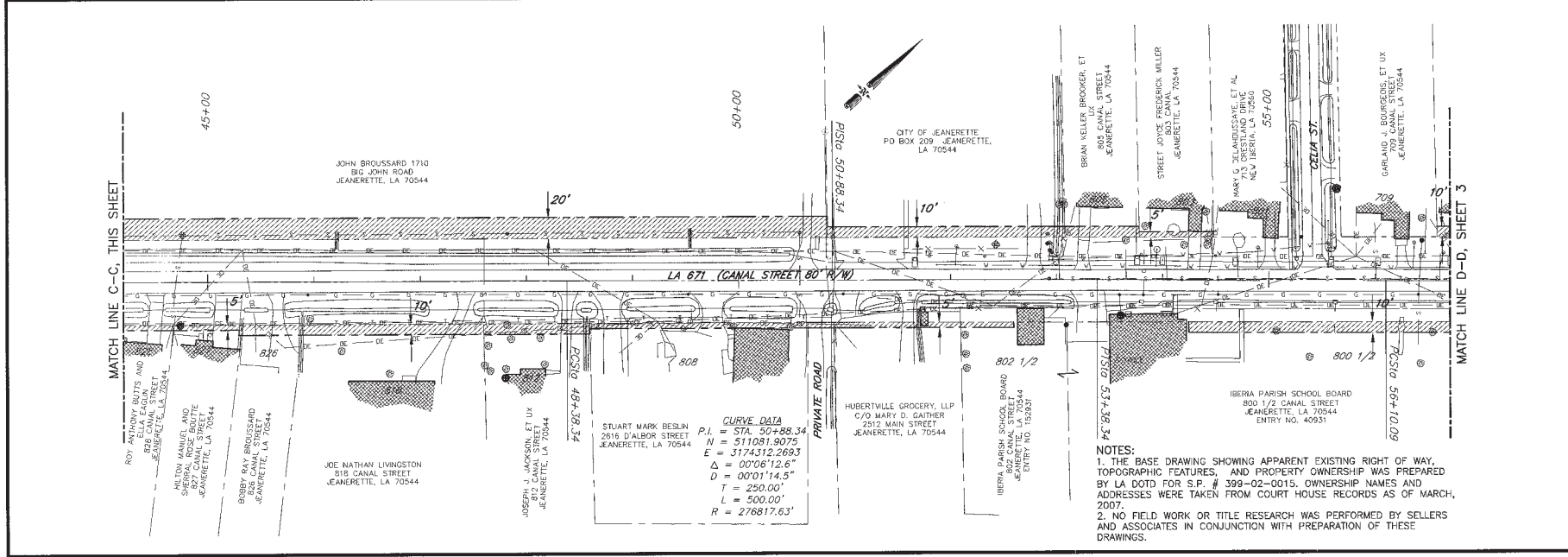
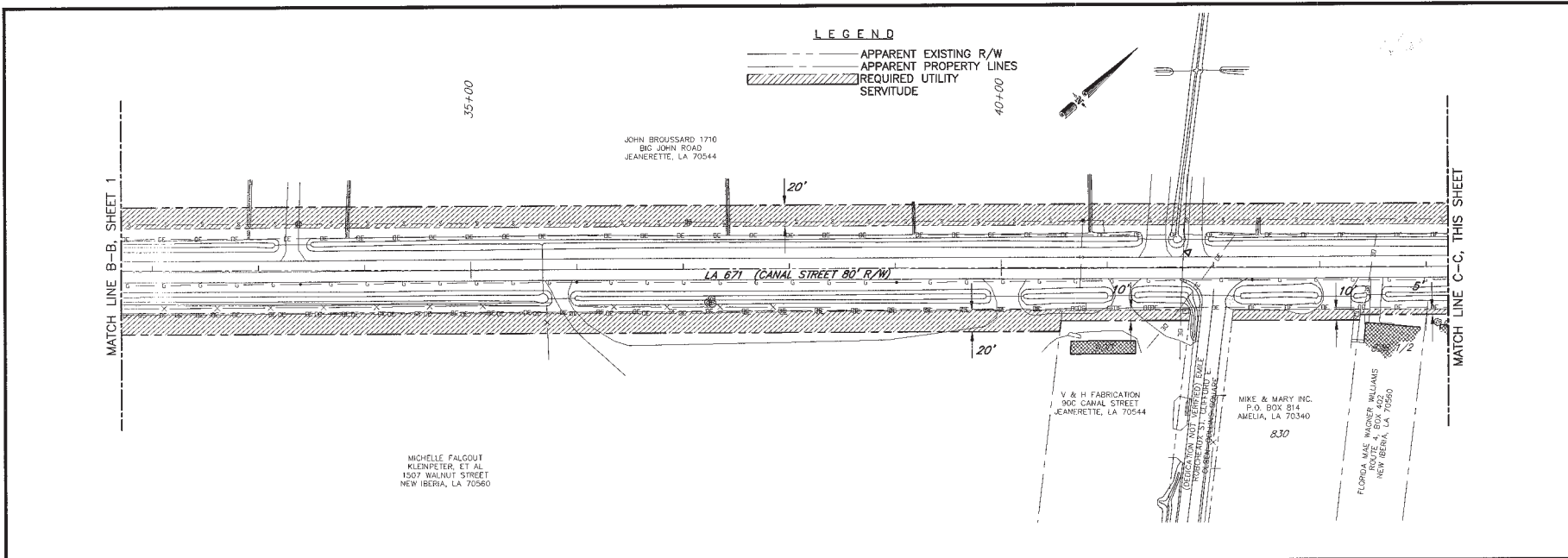


W:\DATA\7856\17856-02\DWG-02.dwg
 DATE: 06/25/10 15:18
 USER: TAV



STATE OF LOUISIANA
 A.S.A.
 TODD A. VINCENT
 Reg. No. 4781
 REGISTERED
 PROFESSIONAL
 LAND SURVEYOR
Todd A. Vincent

1/6/10

REVISIONS	
DATE	BY
1/6/2010	TAV

SHEET DESCRIPTION
 MAP SHOWING EXISTING
 RIGHT-OF-WAY AND REQUIRED
 UTILITY SERVITUDES

Sellers & Associates, Inc.
 SURVEYORS
 Louisiana
 Lafayette - Abbeville

**CANAL STREET (LA. 671)
 IMPROVEMENTS
 FOR THE
 CITY OF JEANERETTE**
 LOCATED IN SECTION, T-3-S, R-2-E
 IBERIA PARISH, LOUISIANA

ENGINEER
 TAV

DRAWN BY
 KDC/JET/LAC

DATE
 APRIL 9, 2009

SCALE
 1" = 50'

PROJECT NO.
 7856-02

FILE NO.
 S1-PROJECTS

ACAD DWG. NO.
 I:\DATA\7856-02\DWG-02.dwg

SHEET
 OF 3 SHEETS