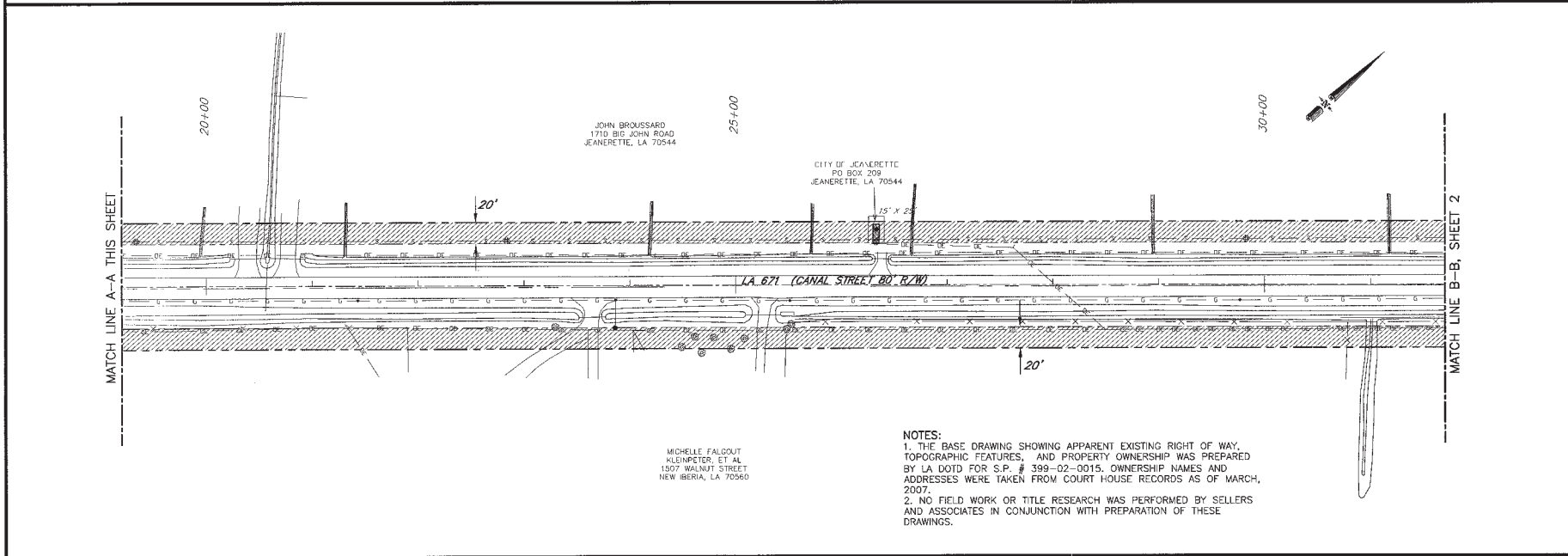


1/6/10

REVISIONS	
DATE	BY
1/8/2010	TAV

SHEET DESCRIPTION  
 MAP SHOWING EXISTING  
 RIGHT-OF-WAY AND REQUIRED  
 UTILITY SERVITUDES

**Sellers & Associates, Inc.**  
 SURVEYORS  
 ENGINEERS  
 1409 Poydras - New Orleans, LA 70112



**CANAL STREET (LA. 671)  
 IMPROVEMENTS  
 FOR THE  
 CITY OF JEANERETTE**  
 LOCATED IN SECTION, T-19-S, R-2-E  
 IBERIA PARISH, LOUISIANA

ENGINEER	TAV
DRAWN BY	KDC/JFF/LAC
DATE	APRIL 9, 2009
SCALE	1" = 50'
PROJECT NO.	7896-02
FILE NO.	S./PROJECTS
ACAD. DWG. NO.	100A17896-02/7896-02.dwg
SHEET	1
OF 3 SHEETS	

ALUMINUM PLOT: 30% OF 7896-02.dwg  
 DATE: 04/09/09 12:58  
 USER: TLABBY